

# CIB-CIT Series



CONTINUOUS  
OPERATION

Range of single inlet direct drive centrifugal fans designed for the continuous extraction of high temperature air stream up to 180°C. Casings are manufactured from AISI 304 stainless sheet steel.

All models incorporate forward curved centrifugal impellers manufactured from AISI 304 stainless sheet steel.

Available, depending upon the model, with single or three phase 2 pole motors.

### Motors

All motors are IP55, class F.

Electrical supply:

Single phase 230V 50 Hz

Three-phase 230/400V-50Hz

### Additional Information

Models 200, 225 and 250 are supplied with a support

Standard supplied position: LG 270.

### On request

- Fan fitted with 2-speed motor 2/4 poles.
- Motor with PTC thermal protection.
- High efficiency motors (EFF1).

## A P P L I C A T I O N S



Chemical  
industry



CONTINUOUS  
OPERATION

## ■ Technical characteristics

Before installation check that product electrical characteristics listed on the data plate label (Voltage, power, frequency etc) match those of the intended electrical supply.

Model	Speed (r.p.m.)	Motor power (kW)	Maximum absorbed current (A)		Maximum airflow (m <sup>3</sup> /h)	Weight (kg)
			230V	400V		
CIB-97/42	2800	0,03	0,40		200	7,0
CIB-120/52	2800	0,08	0,75		535	8,0
CIB-160/62	2800	0,18	1,50		880	9,0
CIT-180/62	2800	0,55	4,20	1,35	1290	10,0

## Acoustic characteristics

Sound power level in dB(A) at the corresponding frequency band in Hz.

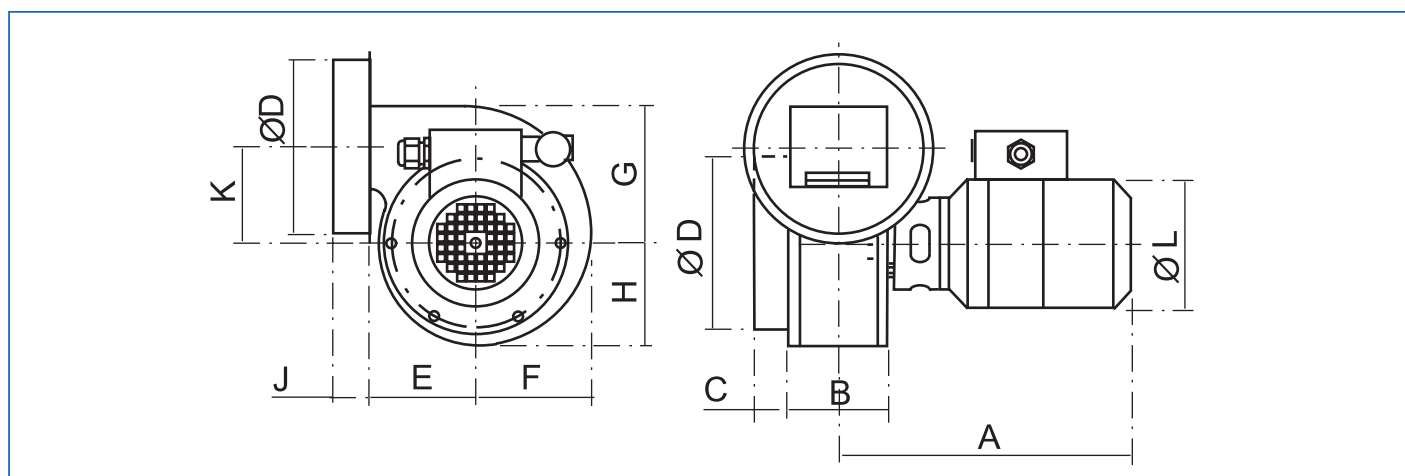
CIB/2-97/42 0,03kW 230V50		63	125	250	500	1000	2000	4000	8000	Total sound power
INLET	B	35	39	50	58	57	59	55	53	64
	M	41	36	49	55	55	58	53	50	62
	H	47	41	50	53	54	59	51	47	62
DISCHARGE	B	35	39	47	57	62	57	52	50	64
	M	40	37	45	53	60	58	49	47	63
	H	46	42	45	50	60	61	47	45	64

CIB/2-160/62 0,18kW 230V50		63	125	250	500	1000	2000	4000	8000	Total sound power
INLET	B	50	54	65	73	72	74	70	68	79
	M	56	51	64	70	70	73	68	65	77
	H	62	56	65	68	69	74	66	62	77
DISCHARGE	B	50	54	62	72	77	72	67	65	80
	M	55	52	60	68	75	73	64	62	78
	H	61	57	60	65	75	76	62	60	79

CIB-120/52 0,08kW 230V50		63	125	250	500	1000	2000	4000	8000	Total sound power
INLET	B	41	45	56	64	63	65	61	59	70
	M	47	42	55	61	61	64	59	56	68
	H	53	47	56	59	60	65	57	53	68
DISCHARGE	B	41	45	53	63	68	63	58	56	71
	M	46	43	51	59	66	64	55	53	69
	H	52	48	51	56	66	67	53	51	70

CIT-180/62 0,55kW 230/400V50		63	125	250	500	1000	2000	4000	8000	Total sound power
INLET	B	54	58	69	77	76	78	74	72	83
	M	60	55	68	74	74	77	72	69	81
	H	66	60	69	72	73	78	70	66	81
DISCHARGE	B	54	58	66	76	81	76	71	69	83
	M	59	56	64	72	79	77	68	66	82
	H	65	61	64	69	79	80	66	64	83

## Dimensions (mm)



Model	A	B	C	D	E	F	G	H	J	K	L
CIB-97/42	206	58	32	102	78	72	-	67	30	54	112
CIB-120/52	256	86	31	152	93	100	120	90	30	83	112
CIB-160/62	272	72	51	152	124	139	146	126	50	85	126
CIT-180/62	292	72	51	152	124	139	146	126	50	85	141

## Performance curves

- Fan ducted on both inlet and outlet sides.
- Air volume in m<sup>3</sup>/h.
- Static pressure in mmWG and Pa.

