

■ Ventiladores de simple oído

Los ventiladores de las series CBS son ventiladores centrifugos de simple oído con rodetes de álabes hacia delante.

Las volutas están fabricadas en chapa galvanizada y formadas por dos laterales soldados por puntos a una envolvente curva. Unas estructuras laterales rectangulares construidas con perfiles en "L" formando una estructura cúbica refuerzan el aparato. Para un correcto anclaje, se utilizan unos taladros de coliso en las esquinas del marco.

Disponen de rodamientos de bolas que se montan sobre aros de goma (para los modelos 9/4 a 18/8) o soportes de hierro fundido (20/10 a 30/14).

La gama se compone de 9 tamaños, disponibles en dos versiones según el sentido de rotación del rodete:

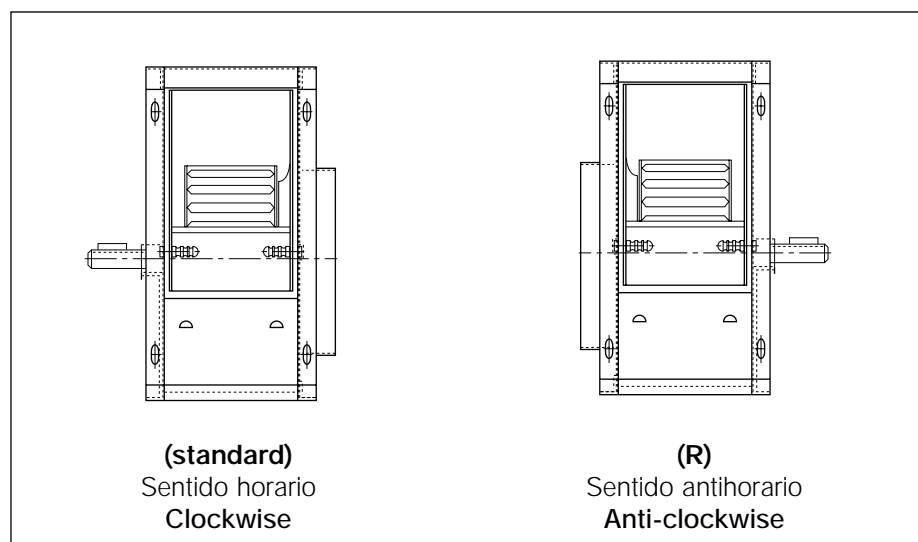
■ Single inlet fans

CBS fans are single inlet centrifugal fans equipped with forward curved blades.

The casing is constructed in galvanized sheet steel electrowelded. Rectangular side structures built with "L" profiles are spot-welded to the sides of the fan to strengthen the units. To allow for a proper fixing, grooved-shapes are drilled on the corners of the frame.

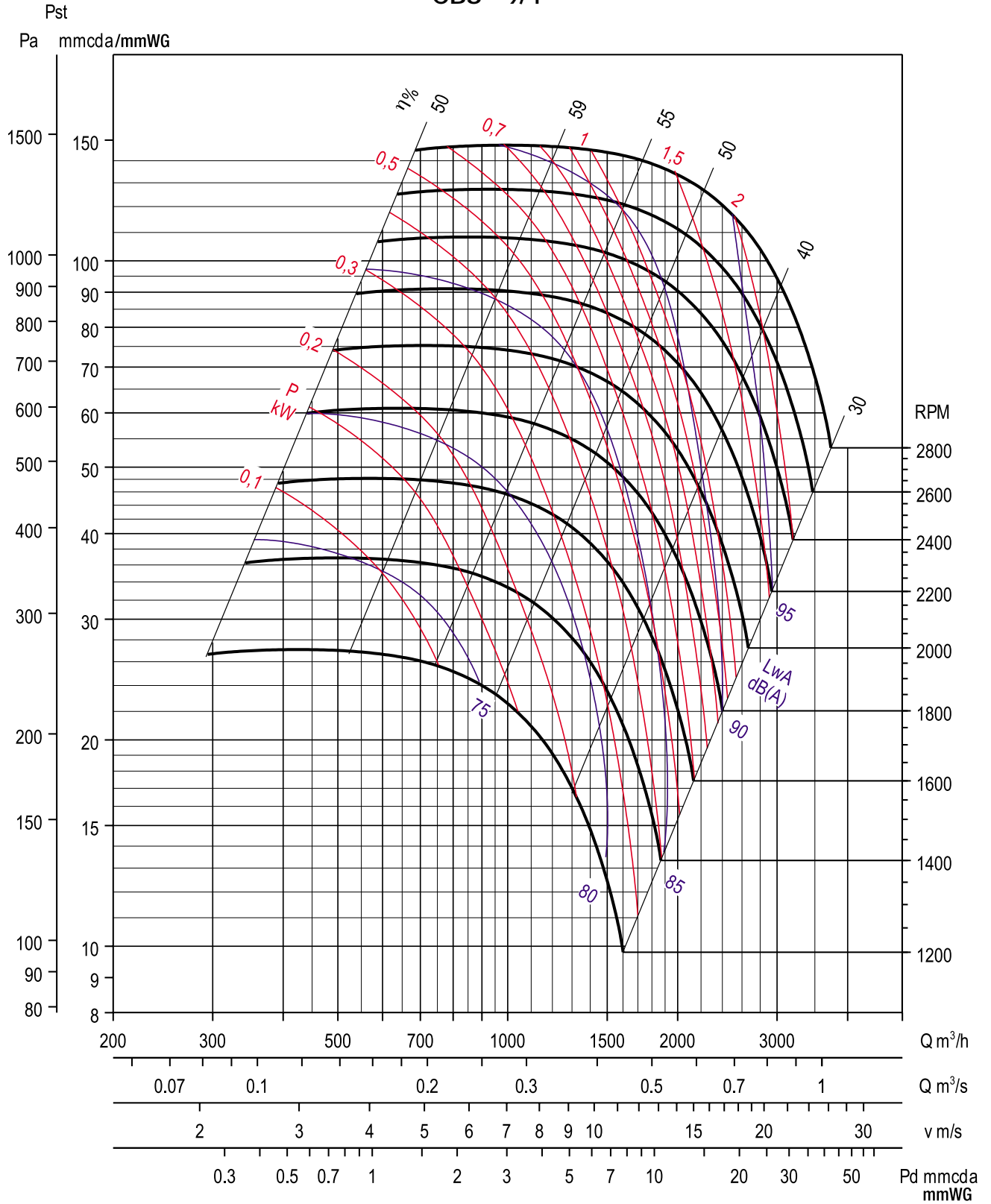
Ball bearing are mounted in a rubber anti-vibration sleeve into two bearing support brackets for 9/4 to 18/8 models or fitted with cast ball bearing housings for 20/10 to 30/14 models.

The range comprises 9 sizes available in two versions according to the rotation of the impeller:



	MODELOS / MODELS									
	9/4	10/6	12/6	15/8	18/8	20/10	22/11	25/13	30/14	
Peso - Weight (kg)	9	11	17	23	33	70	72	80	120	
Máx. RPM - Max. RPM	2800	2800	2400	1700	1500	1200	1400	1100	700	
Pot. abs. máx. - Max power abs. (kW)	2,2	4	5,5	5,5	7,5	11	15	15	18,5	
Temp. limites - Operating temp. (°C)	-20/ +85	-20/ +85	-20/ +85	-20/ +85	-20/ +85	-20/ +85	-20/ +85	-20/ +85	-20/ +85	
PD² (Turbinas - Wheels)	0,06	0,12	0,22	0,52	1,19	2,73	4,01	6,90	12,17	

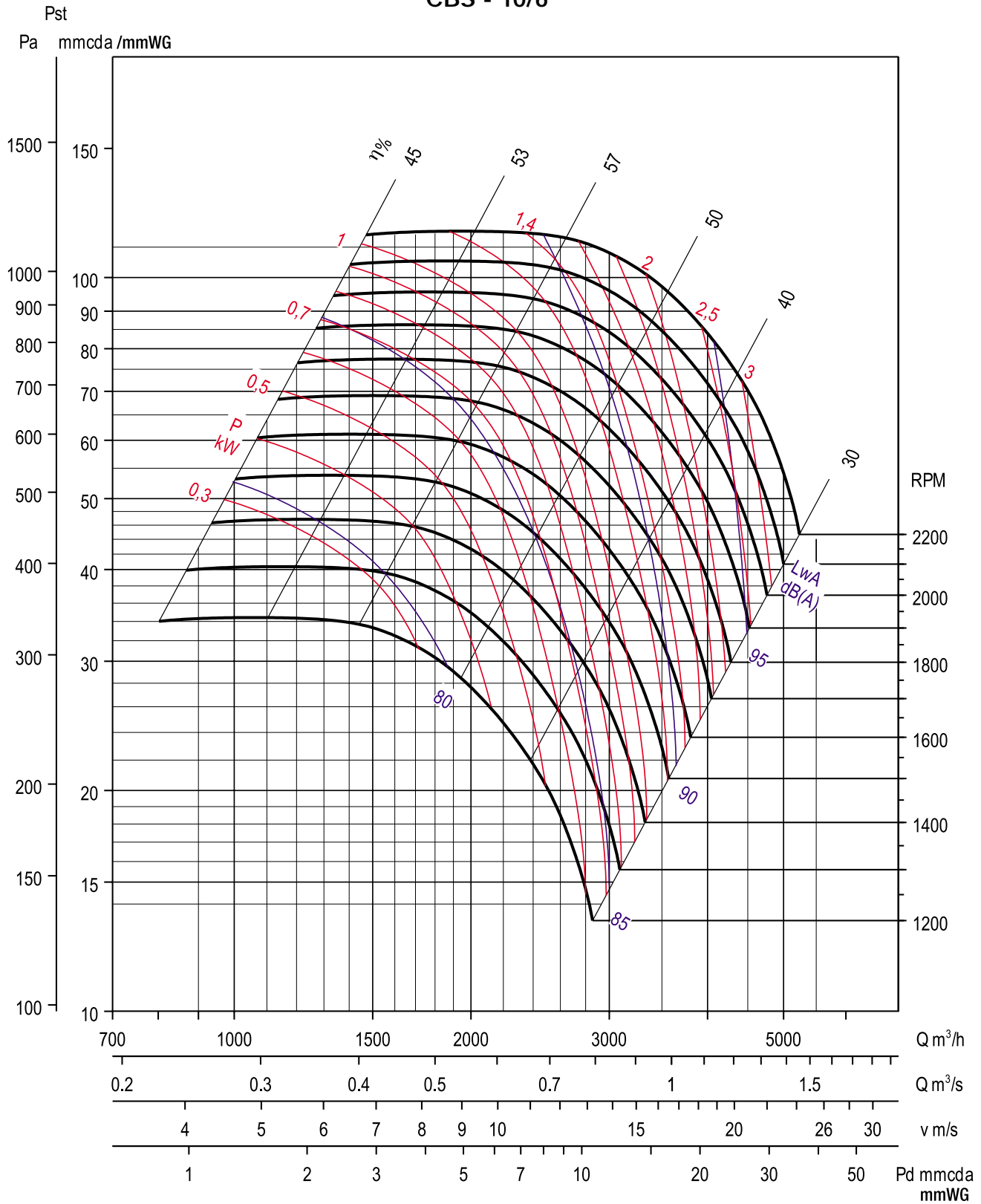
CBS - 9/4



Hz	63	125	250	500	1000	2000	4000	8000
ΔdB	26	19	11	9	4,1	5,4	11	16

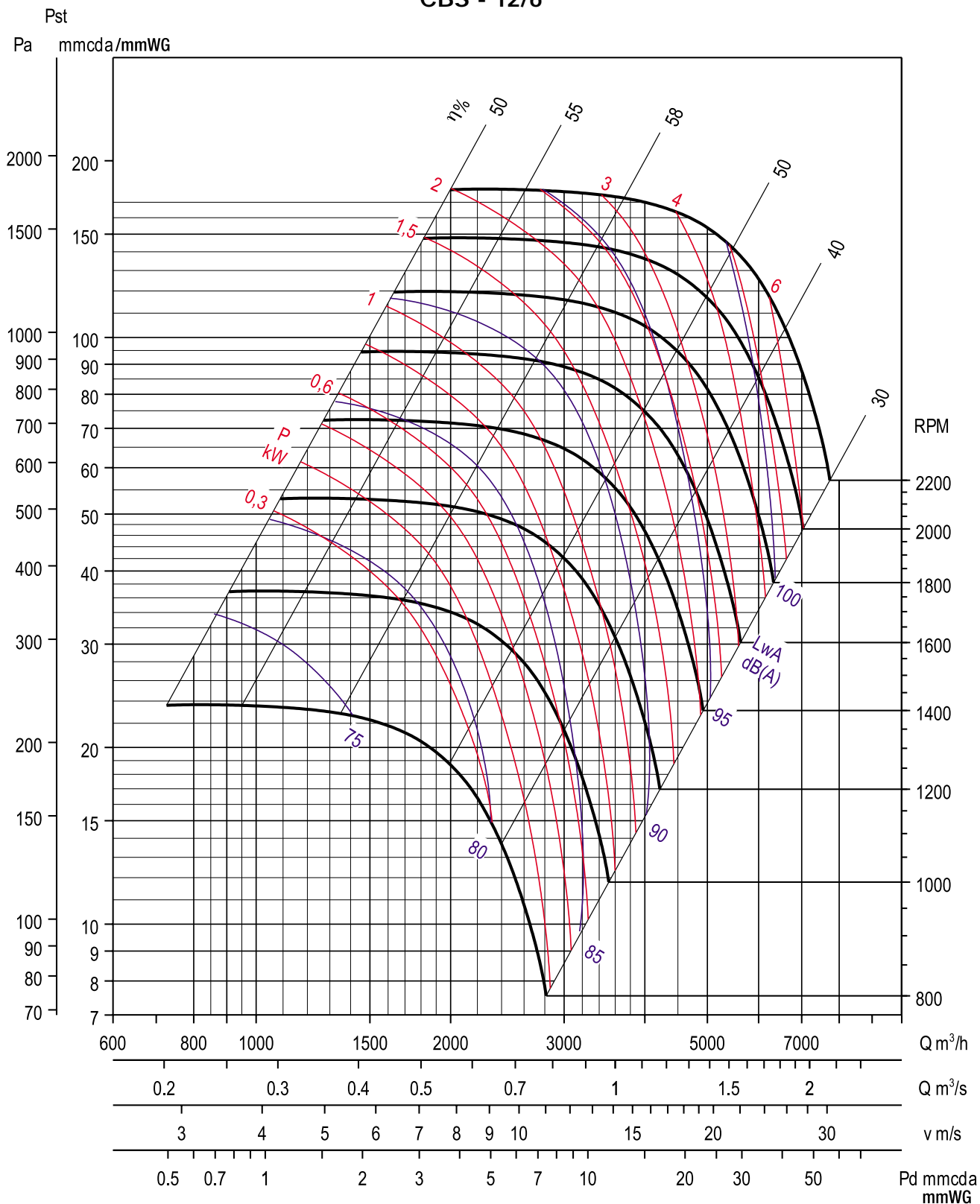


CBS - 10/6



Hz	63	125	250	500	1000	2000	4000	8000
ΔdB	24	15	11	11	4,4	6	8	15

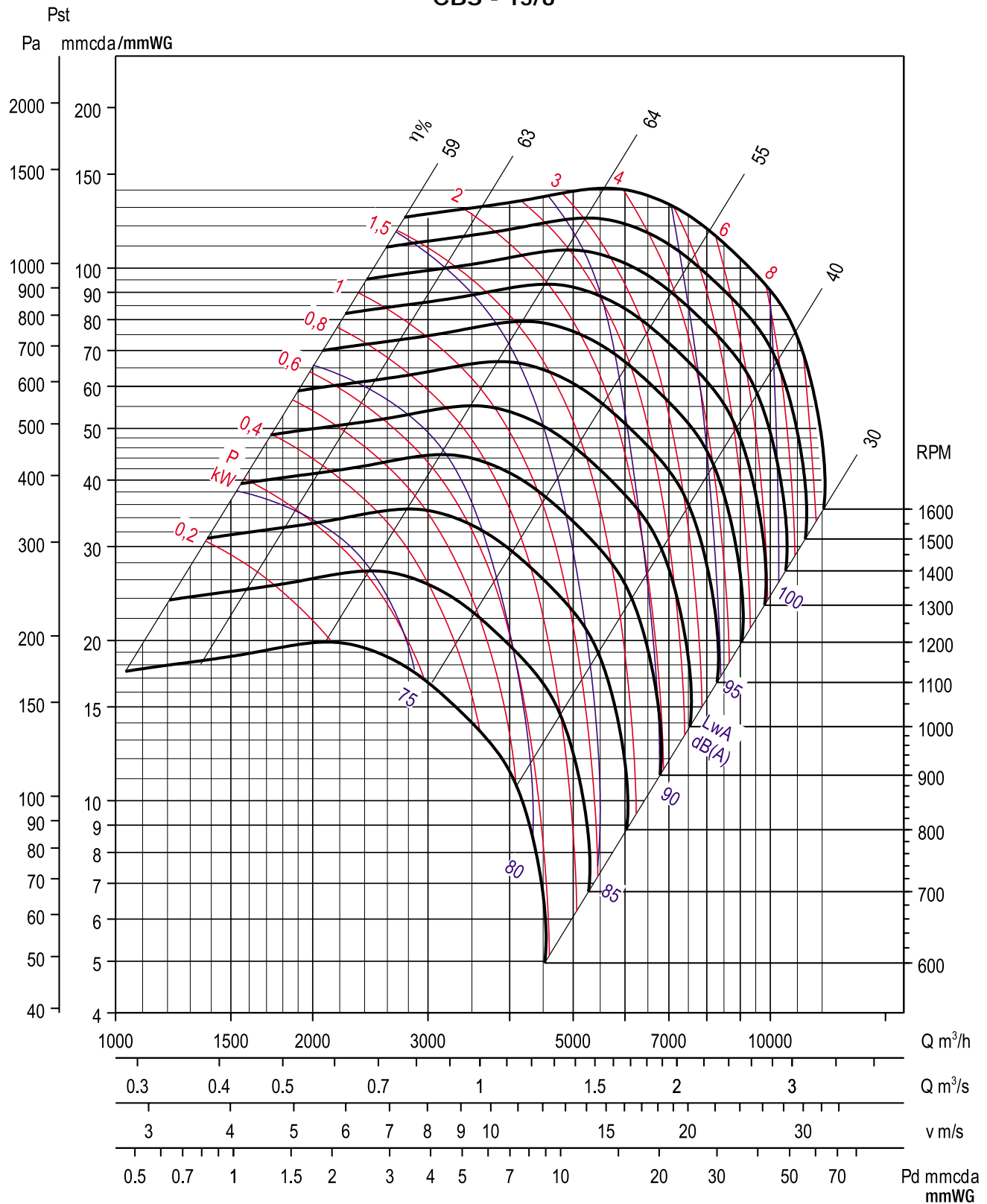
CBS - 12/6



Hz	63	125	250	500	1000	2000	4000	8000
ΔdB	25	16	14	10	3,7	5,5	10	16

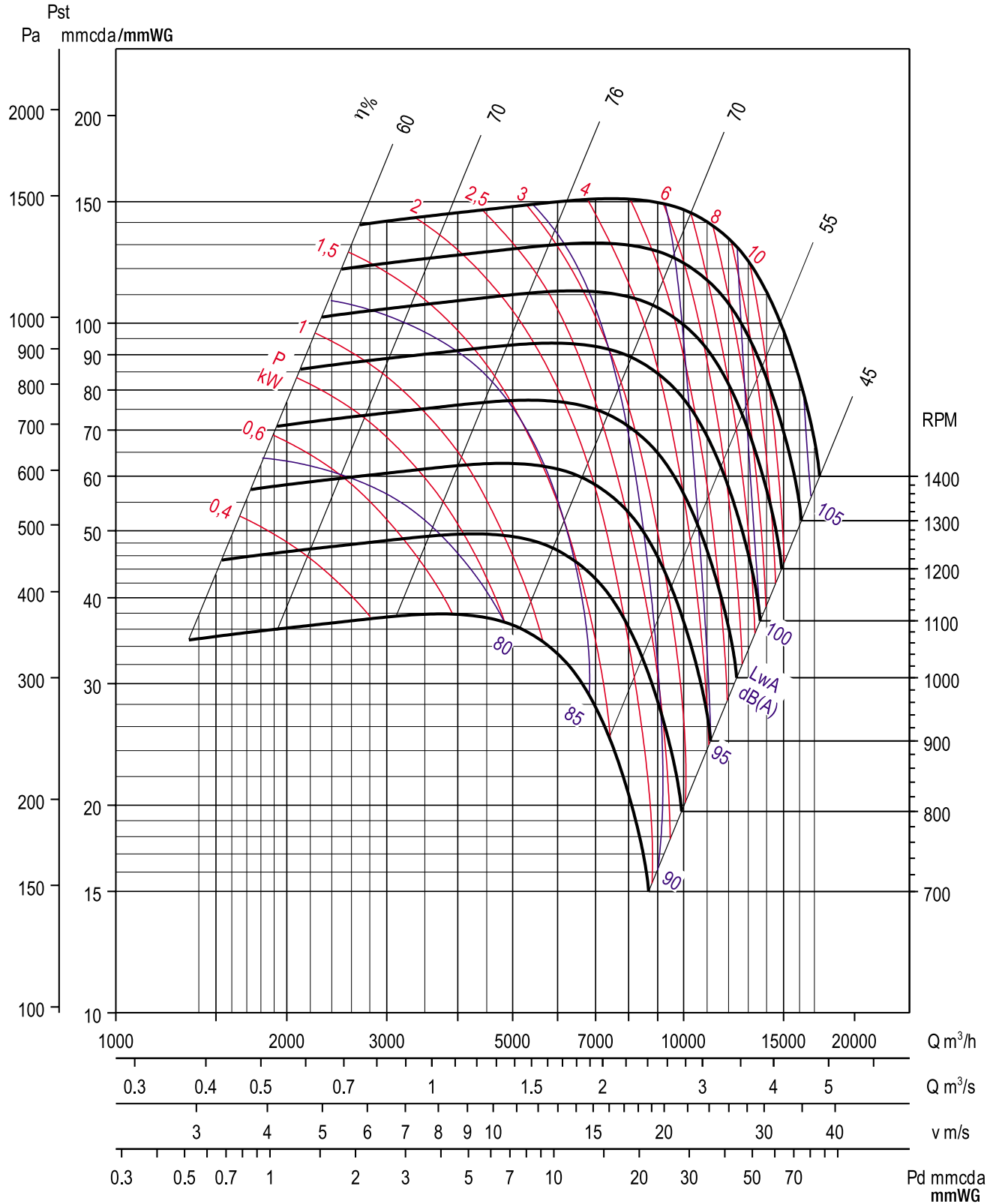


CBS - 15/8



Hz	63	125	250	500	1000	2000	4000	8000
Δ dB	21	10	12	8	4,4	7	11	16

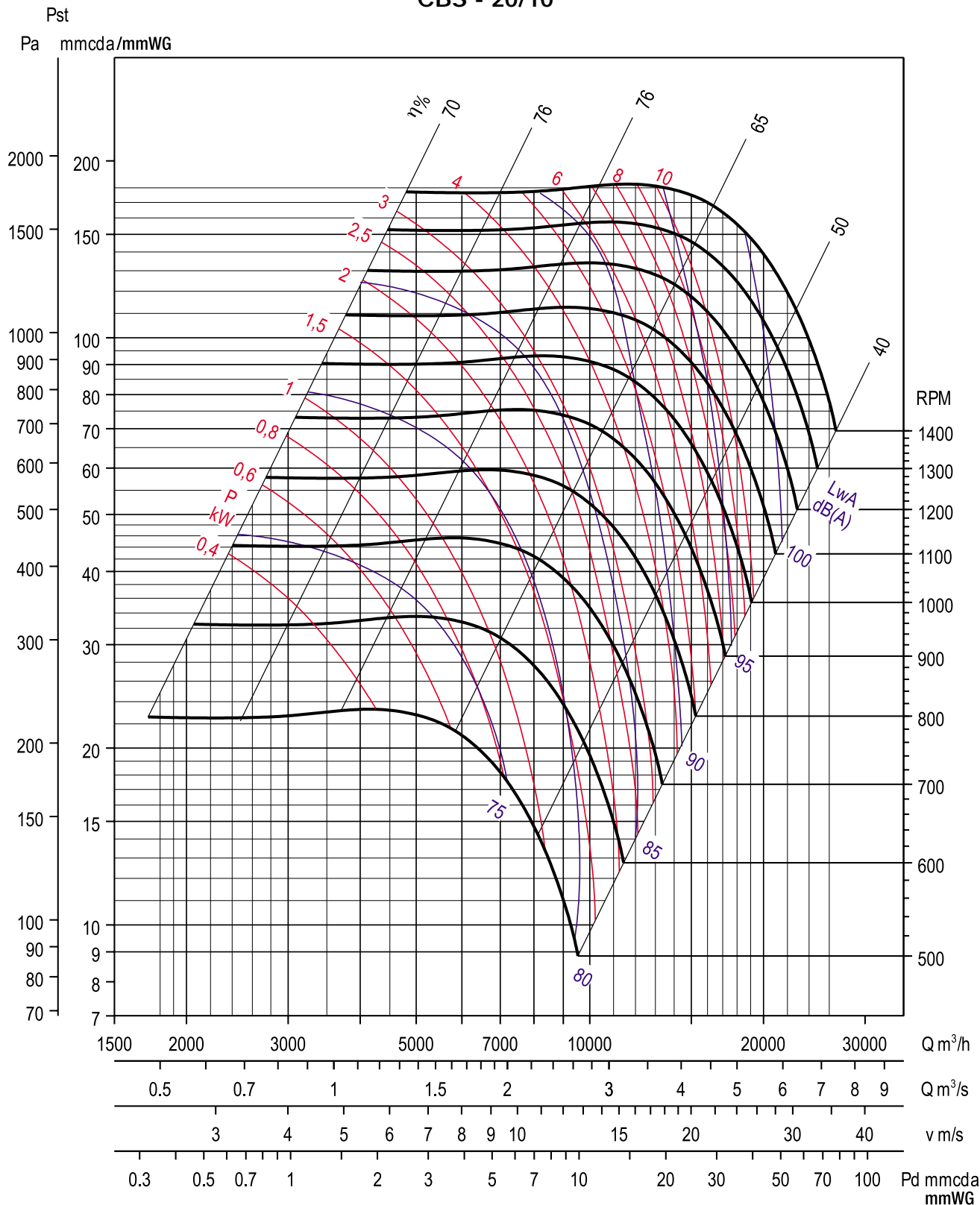
CBS - 18/8



Hz	63	125	250	500	1000	2000	4000	8000
Δ dB	24	11,5	13,4	8,2	4,9	6,2	9,3	16,5

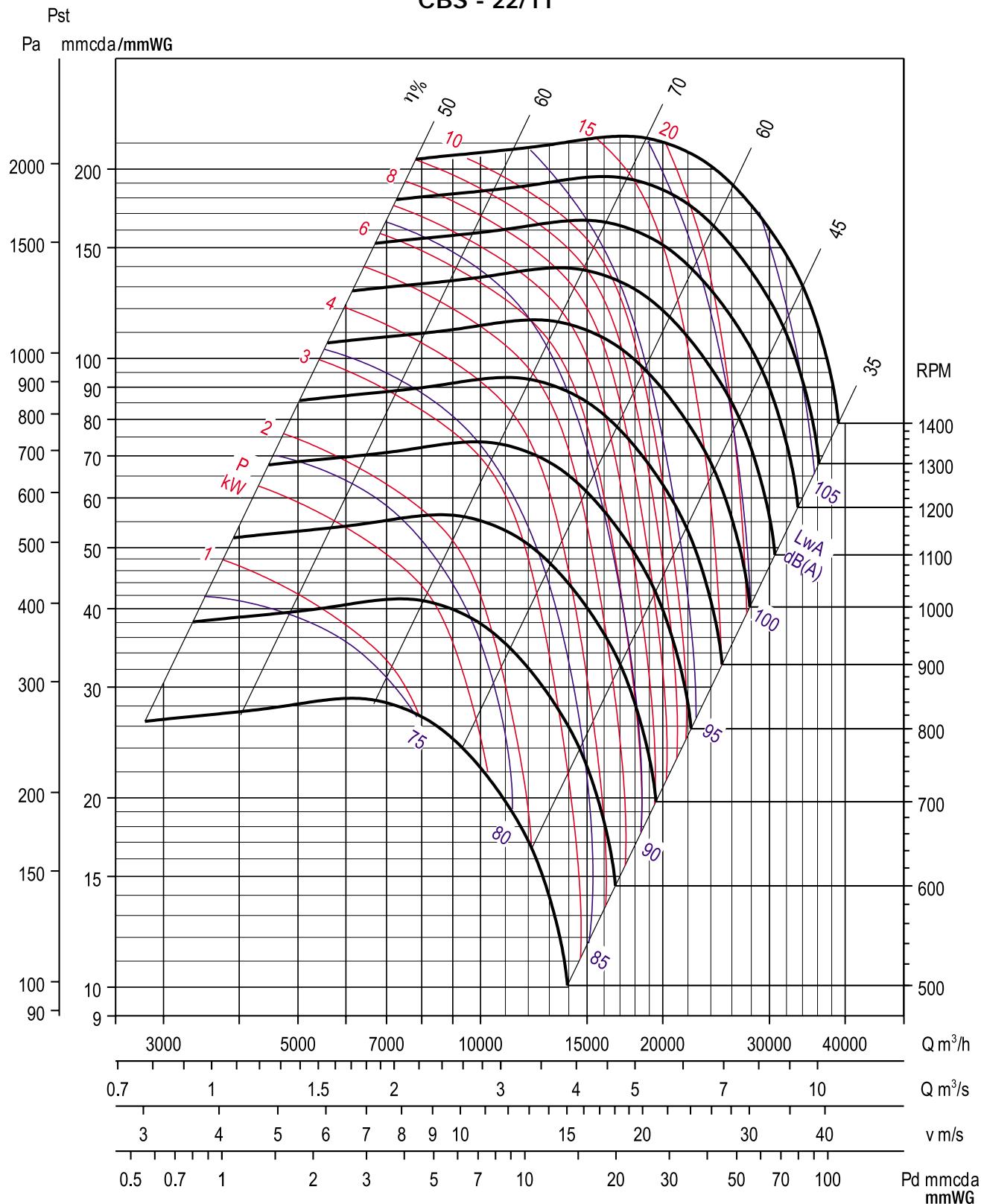


CBS - 20/10



Hz	63	125	250	500	1000	2000	4000	8000
Δ dB	20	14	12	7	4,4	6,5	11	18

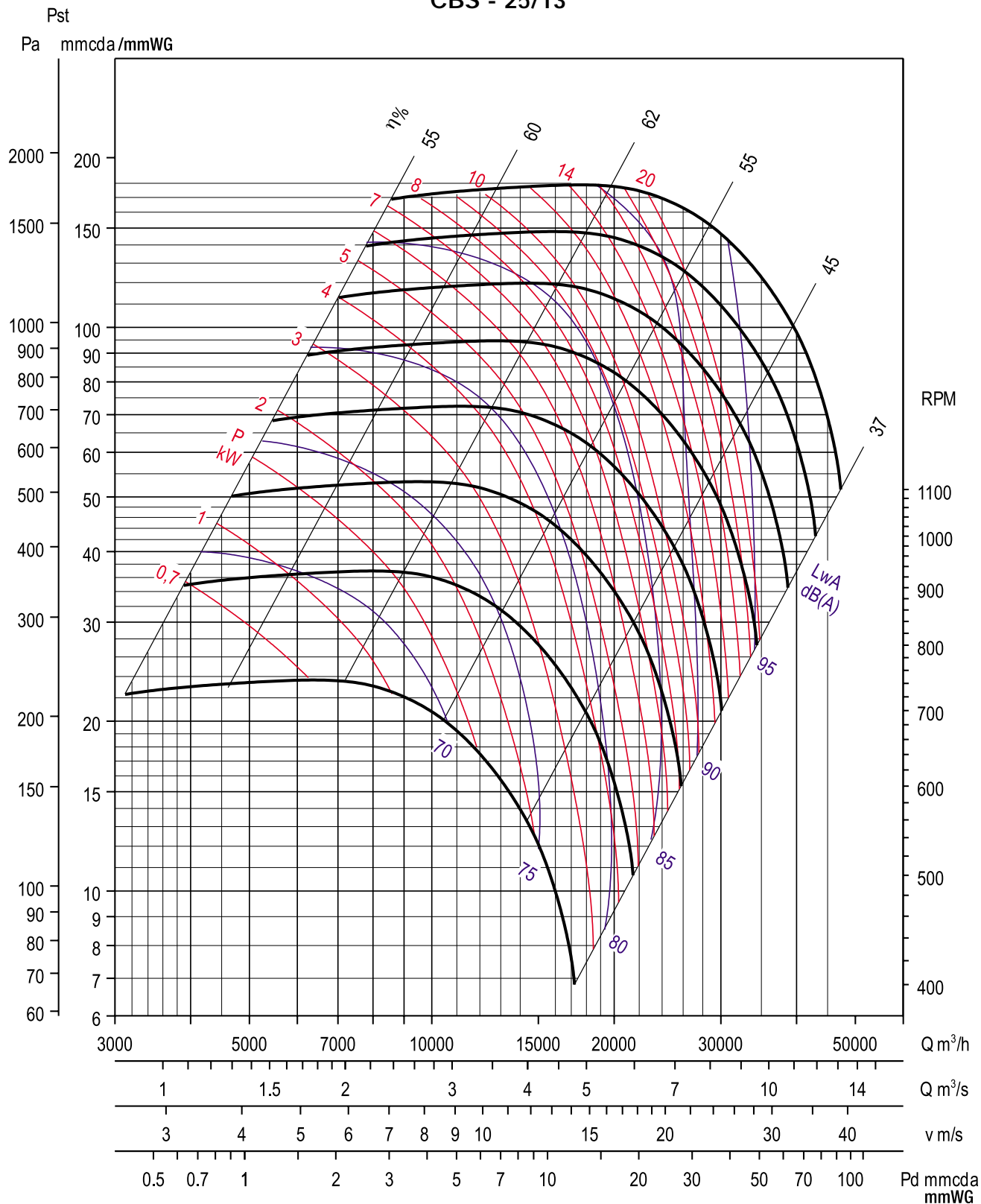
CBS - 22/11



Hz	63	125	250	500	1000	2000	4000	8000
ΔdB	21	15	12	7	4,2	6,7	11	17

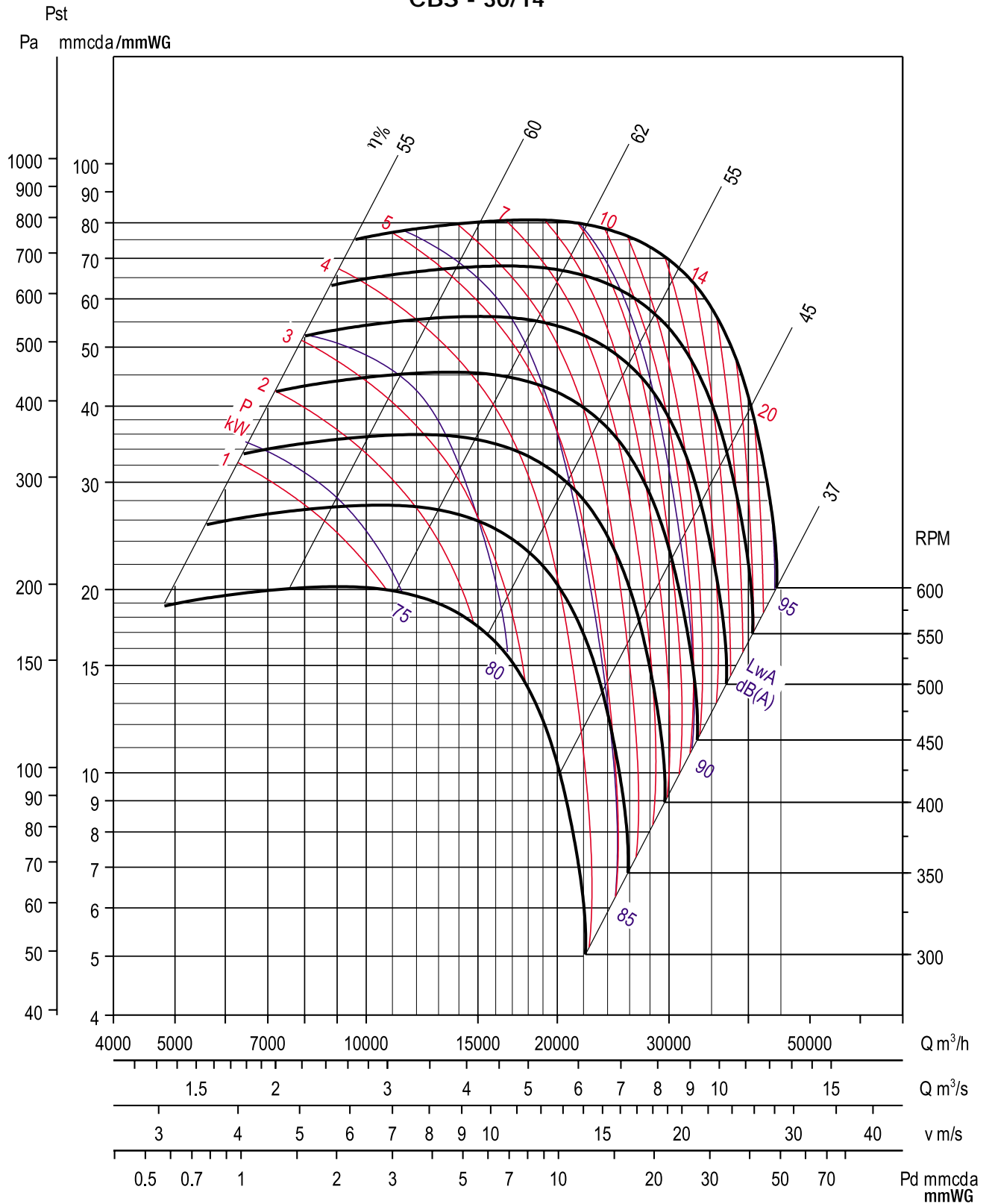


CBS - 25/13



Hz	63	125	250	500	1000	2000	4000	8000
Δ dB	18	15	11	8	4,4	6	11	18

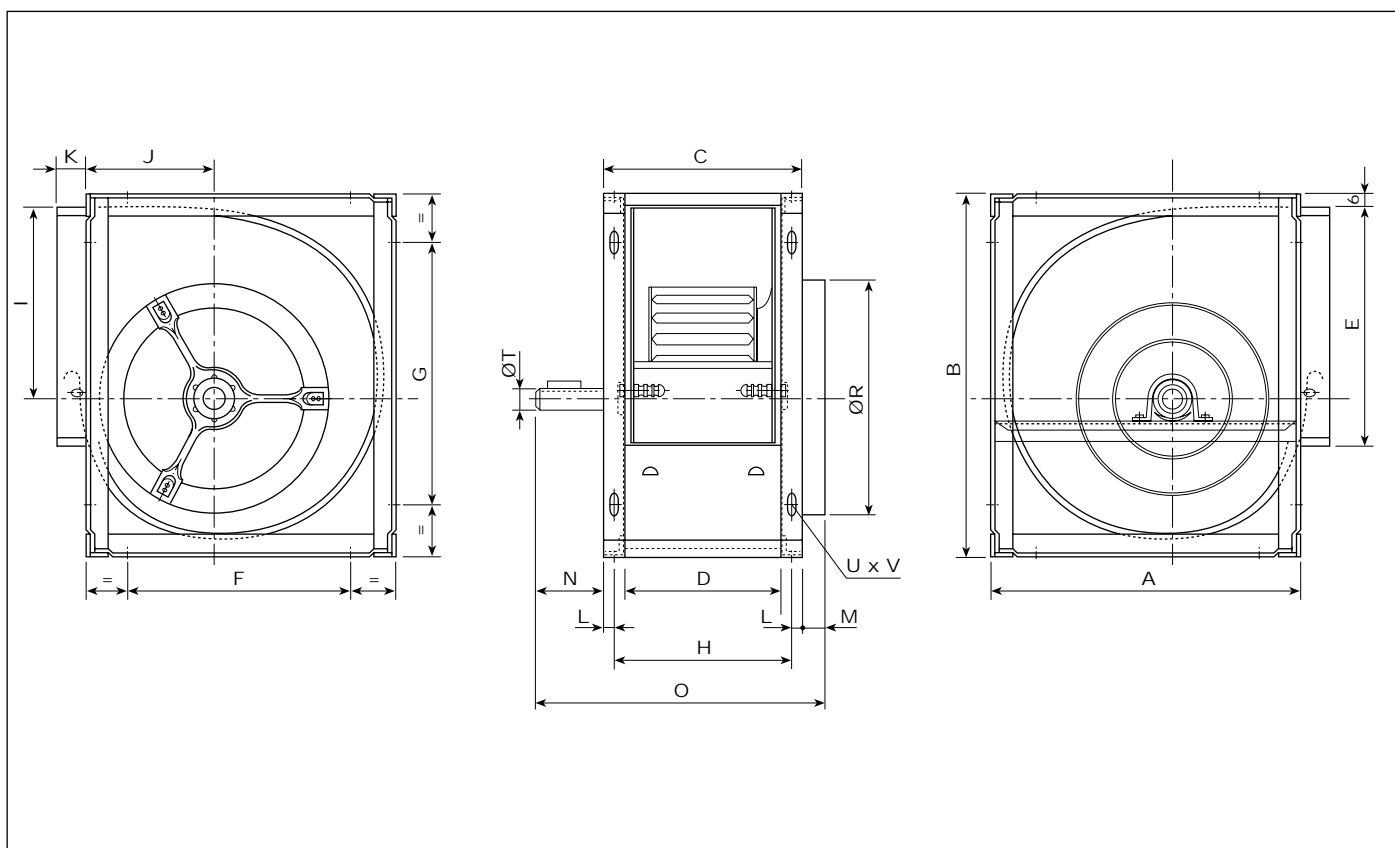
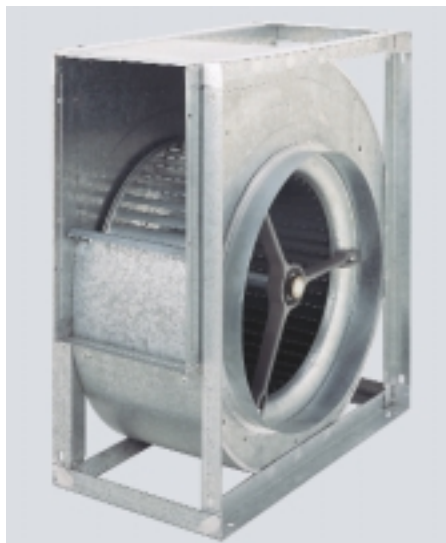
CBS - 30/14



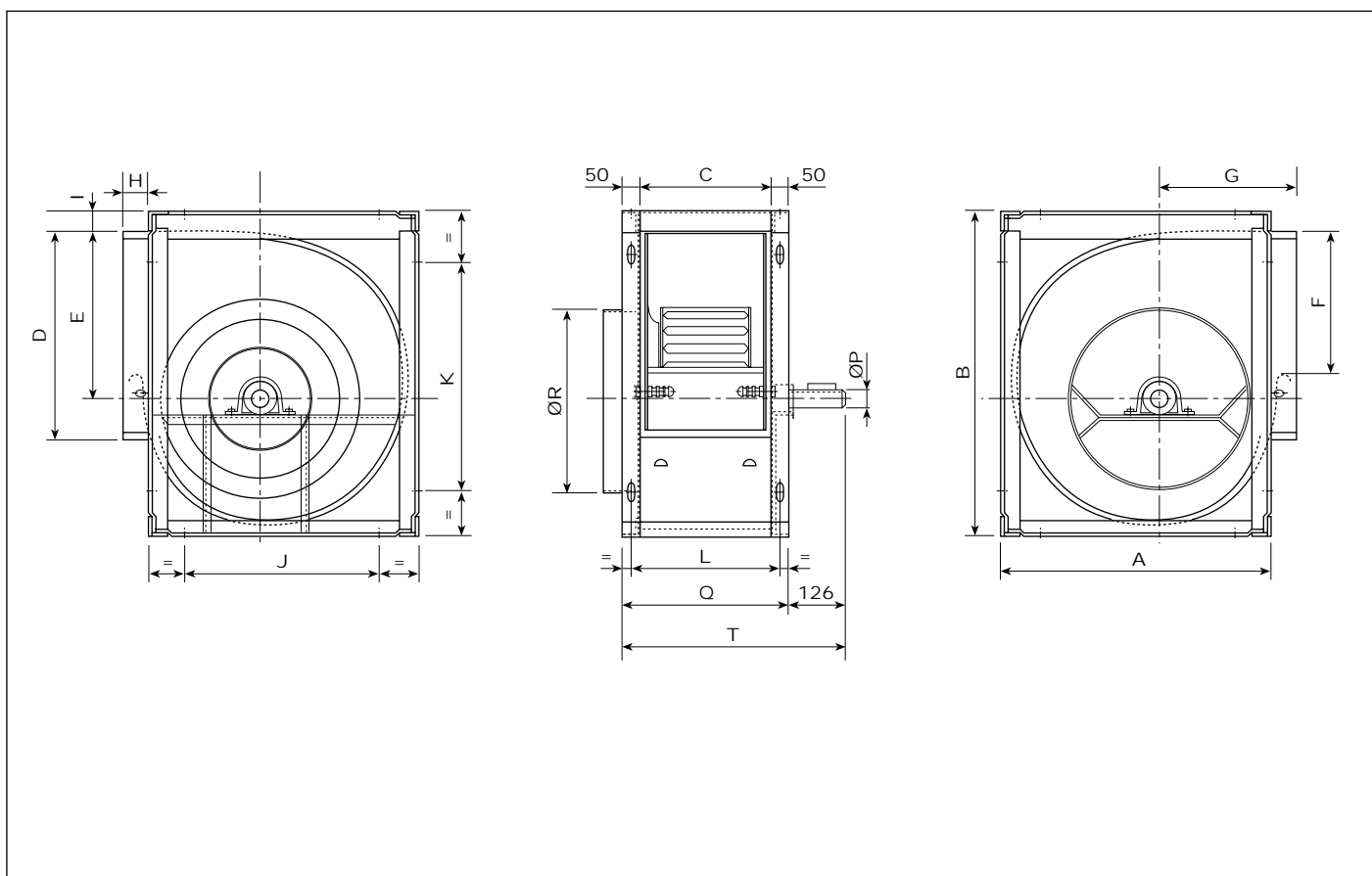
Hz	63	125	250	500	1000	2000	4000	8000
Δ dB	17	17	12	9	4,8	5,1	10	17

■ Dimensiones (mm)
Serie CBS

■ Dimensions (mm)
CBS Series



Modelo/Model	A	B	C	D	E	F	G	H	I	J	K	L	M	N	O	ØR	ØT	UxV
9/4	350	405	192	152	260	270	323	172	220	148	36	10	30	70	292	250	20	16x8,5
10/6	393	453	248	208	289	313	373	228	247	162	38	10	30	70	348	275	20	16x8,5
12/6	461	534	268	208	341	370	442	238	292	191	38	15	20	70	358	325	25	18x11
15/8	538	625	318	258	403	444	533	288	343	226	41	15	20	75	413	402	25	18x11
18/8	656	752	348	268	479	544	642	308	418	276	38	20	10	75	433	470	25	18x11



Modelo/Model	A	B	C	D	E	F	G	H	I	J	K	L	Q	T	ØP	ØR
20/10	772	967	333	625	526	350	367	55	51,5	637	832	383	433	559	35	560
22/11	853	1.058	368	699	580	405	394	55,5	51	718	923	418	468	594	35	614
25/13	950	1.193	423	797,5	649	450	438	55,5	50	813	1.056	473	523	649	40	694
30/14	1.145	1.410	463	942,5	765	550	510	55	50	1.008	1.273	513	563	689	40	797